

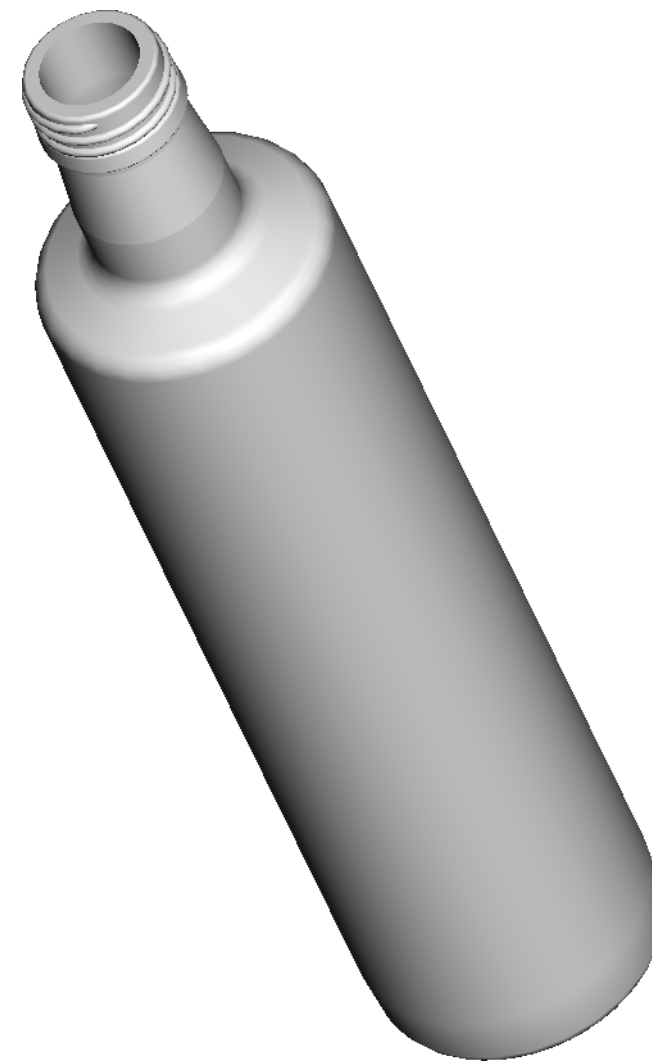
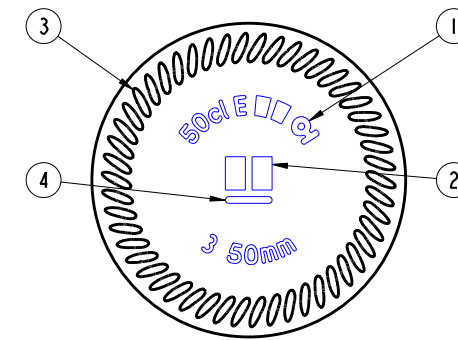
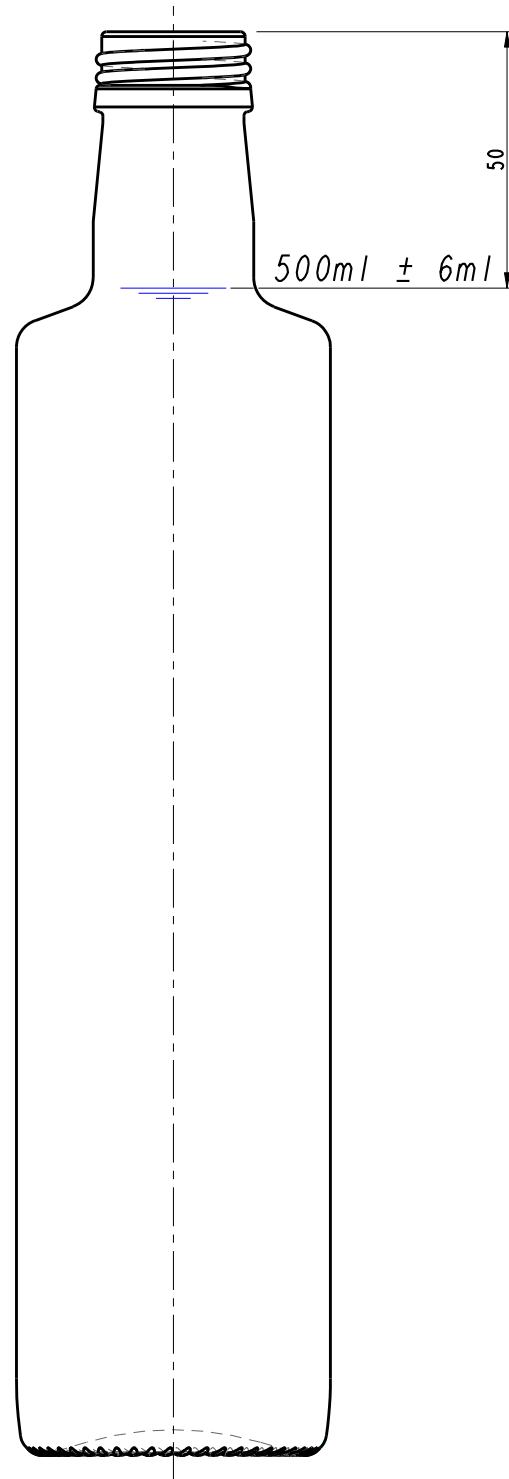
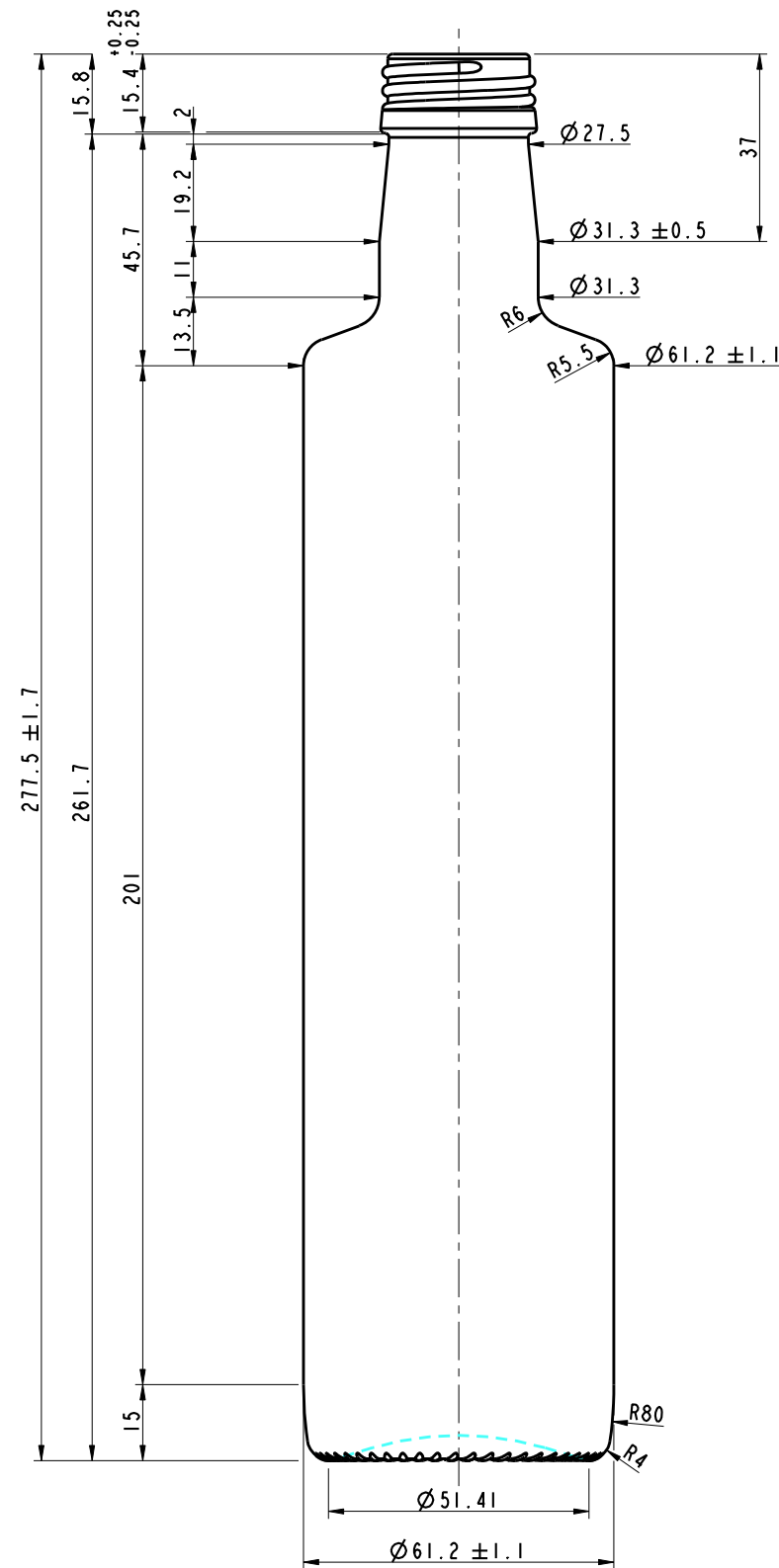
O-I Manufacturing Italy S.p.A.
 Via 1° Maggio, 18
 21040 Origgio(VA), Italy
 Tel. +39 0243463.1

**CONTAINER & MOULD ENGINEERING
 EUROPE**

NOTES:
 THIS DRAWING IS THE PROPERTY OF O-I AND
 MUST NOT BE REPRODUCED OR DISCLOSED
 WITHOUT O-I WRITTEN AUTHORIZATION.

ONLY TOLERANCED DIMENSIONS ARE GUARANTEED.

MANUFACTURING MARKINGS SHOWN ARE FOR ILLUSTRATIVE
 PURPOSES ONLY, ACTUAL MARKINGS ON CONTAINER
 MAY DIFFER, DEPENDANT ON LOCAL LEGISLATION.



TENTATIVE

1 = TRADEMARK
 2 = CAVITY No.
 3 = STIPPLING
 THE SHAPE OF STIPPLES IS ONLY AN
 INDICATION AND THE CONSTRUCTION IS AT
 THE PRODUCTION PLANT DISCRETION.
 4 = CAVITY CODE
 5 = A GLASS IDENTIFICATION

SCALE 1:1

No	DATE	REVISIONS	DESIGN/CHECK
3	14/11/11	MODIFIED HEEL GEOMETRY	GP
2	24/10/11	MODIFIED HEEL GEOMETRY	GP
1	22/02/11	MODIFIED GEOMETRY AND WEIGHT	GP

CATEGORY FOOD	TLT ANGLE 12.54°
MAX. VERTICALITY TOLERANCE 3.1 mm	MEASURING CONTAINER YES
FINISH SAP NUMBER 0841	FINISH REF. UNI 6144 1988
MINIMUM THROUGH BORE 18.5 mm	MAX FILLING TUBE Ø 17 mm
CONTAINER OVERFLOW CAPACITY (BRIMFUL) 520ml APPROX.	
CONTAINER RATED CAPACITY (FILLPOINT) 500ml ± 6ml	
CONTAINER WEIGHT 400g APPROX.	
FINISH DESIGNATION IT_32_UNI 6144_HI58_0841	MAX GAS VOLUME
PROCESS	RETURNABLE NO
DESIGN REF.	
STANDARD 50 cl DORICA	
DESIGNER	GP
DATE	20/11/09
CHECKED	DATE
DRAWING NUMBER 090852	MOULD/SAP NUMBER 00000